

| | | | |
|--------------------|-----------|--------------------|-----------|
| Ag(3)—S(2) | 2.591 (4) | P(2)—C(231) | 1.82 (1) |
| Ag(3)—S(5) | 2.698 (4) | P(3)—C(331) | 1.80 (1) |
| Ag(1)—P(1) | 2.454 (4) | P(3)—C(321) | 1.82 (1) |
| Ag(2)—P(2) | 2.420 (4) | P(3)—C(311) | 1.85 (1) |
| Ag(3)—P(3) | 2.454 (4) | | |
| Ag(1)—Mo—Ag(3) | 65.33 (4) | C(211)—P(2)—C(231) | 104.3 (6) |
| Ag(2)—Mo—Ag(1) | 87.84 (4) | C(221)—P(2)—C(231) | 105.8 (6) |
| Ag(2)—Mo—Ag(3) | 73.18 (4) | C(331)—P(3)—C(321) | 106.5 (7) |
| S(2)—Mo—S(1) | 112.5 (1) | C(331)—P(3)—C(311) | 105.3 (7) |
| S(3)—Mo—S(1) | 113.2 (1) | C(321)—P(3)—C(311) | 102.0 (7) |
| S(3)—Mo—S(2) | 107.8 (2) | Mo—S(2)—Ag(1) | 77.8 (1) |
| S(4)—Mo—S(1) | 106.6 (2) | Mo—S(2)—Ag(3) | 80.4 (1) |
| S(4)—Mo—S(2) | 107.7 (2) | Mo—S(3)—Ag(2) | 75.9 (1) |
| S(4)—Mo—S(3) | 108.9 (2) | Ag(1)—S(2)—Ag(3) | 79.9 (1) |
| P(1)—Ag(1)—S(1) | 111.2 (1) | Ag(2)—S(1)—Ag(1) | 109.6 (1) |
| P(1)—Ag(1)—S(2) | 116.1 (1) | Ag(2)—S(5)—Ag(3) | 85.0 (1) |
| P(1)—Ag(1)—S(6) | 110.4 (1) | P—S(5)—Ag(2) | 108.2 (2) |
| S(1)—Ag(1)—S(2) | 92.0 (1) | P—S(5)—Ag(3) | 95.2 (2) |
| S(1)—Ag(1)—S(6) | 119.3 (1) | P—S(6)—Ag(1) | 98.6 (2) |
| S(2)—Ag(1)—S(6) | 106.9 (1) | O(2)—P—O(1) | 106.0 (6) |
| P(2)—Ag(2)—S(1) | 127.4 (1) | O(2)—P—S(5) | 104.7 (4) |
| P(2)—Ag(2)—S(3) | 121.7 (1) | O(2)—P—S(6) | 113.5 (4) |
| P(2)—Ag(2)—S(5) | 109.2 (1) | O(1)—P—S(5) | 109.4 (4) |
| S(1)—Ag(2)—S(3) | 93.5 (1) | O(1)—P—S(6) | 105.6 (4) |
| S(1)—Ag(2)—S(5) | 105.9 (1) | S(6)—P—S(5) | 117.1 (2) |
| S(3)—Ag(2)—S(5) | 93.2 (1) | C(1)—O(1)—P | 119 (1) |
| S(2)—Ag(3)—S(5) | 133.0 (1) | C(3)—O(2)—P | 124 (1) |
| P(3)—Ag(3)—S(2) | 118.4 (1) | C(2)—C(1)—O(1) | 107 (1) |
| P(3)—Ag(3)—S(5) | 103.8 (1) | O(2)—C(3)—C(4) | 114 (2) |
| Mo—S(1)—Ag(1) | 77.6 (1) | C(111)—P(1)—Ag(1) | 114.5 (5) |
| Mo—S(1)—Ag(2) | 77.1 (1) | C(121)—P(1)—Ag(1) | 113.7 (5) |
| C(321)—P(3)—Ag(3) | 118.1 (5) | C(131)—P(1)—Ag(1) | 113.2 (5) |
| C(311)—P(3)—Ag(3) | 111.0 (5) | C(211)—P(2)—Ag(2) | 112.7 (5) |
| C(111)—P(1)—C(121) | 103.8 (6) | C(221)—P(2)—Ag(2) | 114.8 (4) |
| C(111)—P(1)—C(131) | 105.7 (7) | C(231)—P(2)—Ag(2) | 114.7 (4) |
| C(121)—P(1)—C(131) | 104.8 (7) | C(331)—P(3)—Ag(3) | 112.7 (5) |
| C(211)—P(2)—C(221) | 103.5 (6) | | |

References

- Beurskens, P. T. (1984). *DIRDIF. Direct Methods for Difference Structures – an Automatic Procedure for Phase Extension and Refinement of Difference Structure Factors*. Technical Report 1984/1. Crystallography Laboratory, Univ. of Nijmegen, The Netherlands.
- Cromer, D. T. & Waber, J. T. (1974). *International Tables for X-ray Crystallography*, Vol. IV, Tables 2.2A, 2.3.1. Birmingham: Kynoch Press. (Present distributor Kluwer Academic Publishers.)
- Gheller, S. F., Hambley, T. W., Rodgers, J. R., Brownlee, R. T. C., O'Connor, M. J., Snow, M. R. & Wedd, A. G. (1984). *Inorg. Chem.* **23**, 2519–2528.
- Gilmore, C. J. (1983). *MITHRIL. Computer Program for the Automatic Solution of Crystal Structures from X-ray Data*. Department of Chemistry, Univ. of Glasgow, Scotland.
- Johnson, C. K. (1976). *ORTEPII*. Report ORNL-5138. Oak Ridge National Laboratory, Tennessee, USA.
- Molecular Structure Corporation (1985). *TEXSAN. TEXRAY Structure Analysis Package*. 3200 Research Forest Drive, The Woodlands, TX 77381, USA. (Revised 1987.)
- Molecular Structure Corporation (1986). *CONTROL. An Automation Package for Rigaku AFC Single Crystal Diffractometers*. 3200 Research Forest Drive, The Woodlands, TX 77381, USA.
- Müller, A., Bögge, H., Königer-Ahlborn, E. & Hellman, W. (1979). *Inorg. Chem.* **18**, 2301–2304.
- Müller, A. & Menge, R. (1972). *Z. Anorg. Allg. Chem.* **393**, 259–261.
- Wu, J., Zhu, N., Du, S. & Wu, X. (1992). *Polyhedron*, **11**, 1201–1204.
- Zhu, N., Wu, J., Du, S. & Wu, X. (1992). *Inorg. Chim. Acta*, **191**, 65–68.
- Zhu, N., Zheng, Y. & Wu, X. (1991). *J. Chem. Soc. Chem. Commun.* pp. 235–237.

Acta Cryst. (1994). **C50**, 702–704

Bis(2,6-di-*tert*-butylphenolato- κ O)tin

DAVID M. BARNHART, DAVID L. CLARK* AND JOHN G. WATKIN*

*Isotope and Nuclear Chemistry Division,
Mail Stop C346, Los Alamos National Laboratory,
Los Alamos, NM 87545, USA*

(Received 15 April 1993; accepted 27 September 1993)

Abstract

The title compound, [Sn(C₁₄H₂₁O)₂] (I), contains a two-coordinate tin metal center with Sn—O distances of 2.003 (3) and 2.044 (3) Å, and an O—Sn—O angle of 88.8 (1)°.

Comment

The related complex Sn(O-2,6-*t*Bu₂-4-Me-C₆H₂)₂, prepared from the reaction of tin(II) chloride with lithium 2,6-di-*tert*-butyl-4-methylphenoxide, has

Data collection was performed using *CONTROL* (Molecular Structure Corporation, 1986) software. The scan speed varied between 2.4 and 8° min⁻¹ (in ω) on the basis of *SEARCH* intensity. The scan width was (1.418 + 0.350tan θ)° with maximum (sin θ)/ λ = 0.5946 Å⁻¹. The structure was solved by direct methods using *MITHRIL* (Gilmore, 1983). The heavy atoms, Mo and Ag, were located in the *E* map and the remaining non-H atoms were located using the *DIRDIF* program (Beurskens, 1984). H atoms were placed in geometrically calculated positions (C—H 0.95 Å), but not included in the refinement. The structure was refined by full-matrix least-squares techniques with anisotropic displacement parameters for all Mo, Ag, S, P and O atoms and isotropic displacement parameters for all C atoms. All calculations were performed on a VAX 785 computer using the *TEXSAN* (Molecular Structure Corporation, 1985) program package. The view of the molecule (Fig. 1) was produced using *ORTEPII* (Johnson, 1976).

This research was supported by grants from the State Key Laboratory of Structural Chemistry, Fujian Institute of Research on the Structure of Matter, Chinese Academy of Sciences and the National Science Foundation of China.

Lists of structure factors, anisotropic displacement parameters and H-atom coordinates have been deposited with the British Library Document Supply Centre as Supplementary Publication No. SUP 71691 (25 pp.). Copies may be obtained through The Technical Editor, International Union of Crystallography, 5 Abbey Square, Chester CH1 2HU, England. [CIF reference: AL1055]

been crystallographically characterized (Çetinkaya, Gümrükçü, Lappert, Atwood, Rogers & Zaworotko, 1980).

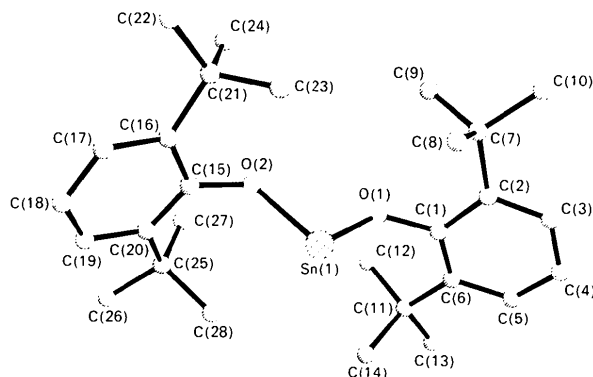
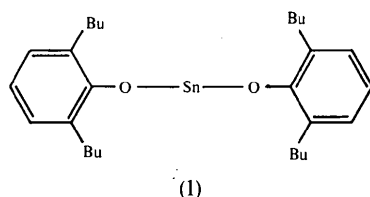


Fig. 1. Molecular structure and labeling scheme for the title compound $[\text{Sn}(\text{C}_{14}\text{H}_{21}\text{O})_2]$.

Experimental

The reaction between SnI_4 and 4 equivalents of $\text{K}(\text{O}-2,6\text{-}^i\text{Bu}_2\text{-C}_6\text{H}_3)$ in tetrahydrofuran produced the yellow tin(II) complex $[\text{Sn}(\text{O}-2,6\text{-}^i\text{Bu}_2\text{-C}_6\text{H}_3)_2]$ in moderate yield. Suitable crystals were grown by the slow evaporation of a toluene solution under an inert atmosphere.

Crystal data

$[\text{Sn}(\text{C}_{14}\text{H}_{21}\text{O})_2]$
 $M_r = 529.3$
 Monoclinic
 $P2_1/n$
 $a = 13.767(2) \text{ \AA}$
 $b = 13.849(2) \text{ \AA}$
 $c = 13.865(2) \text{ \AA}$
 $\beta = 94.76(1)^\circ$
 $V = 2634.4(10) \text{ \AA}^3$
 $Z = 4$
 $D_x = 1.335 \text{ Mg m}^{-3}$

Data collection

Enraf-Nonius CAD-4 diffractometer
 2θ - θ scans
 Absorption correction: empirical
 $T_{\min} = 0.883$, $T_{\max} = 0.997$

Mo $K\alpha$ radiation
 $\lambda = 0.71073 \text{ \AA}$
 Cell parameters from 24 reflections
 $\theta = 14\text{--}18^\circ$
 $\mu = 0.990 \text{ mm}^{-1}$
 $T = 203 \text{ K}$
 Parallelepiped
 $0.3 \times 0.1 \times 0.1 \text{ mm}$
 Yellow

2001 observed reflections
 $[F > 4.0\sigma(F)]$
 $R_{\text{int}} = 0.012$
 $\theta_{\text{max}} = 25^\circ$
 $h = -11 \rightarrow 11$
 $k = 0 \rightarrow 12$
 $l = 0 \rightarrow 16$

2675 measured reflections
 2253 independent reflections

2 standard reflections
 frequency: 120 min
 intensity variation: 1%

Refinement

Refinement on F^2
 $R = 0.0241$
 $wR = 0.0312$
 $S = 1.51$
 2001 reflections
 281 parameters
 H-atom parameters not refined
 $w = 1/[\sigma^2(F) + 0.0002F^2]$
 $(\Delta/\sigma)_{\text{max}} = 0.001$

$\Delta\rho_{\text{max}} = 0.40 \text{ e \AA}^{-3}$
 $\Delta\rho_{\text{min}} = -0.27 \text{ e \AA}^{-3}$
 Extinction correction:
 $F^* = F[1 + (0.002 \times \chi F^2/\sin 2\theta)]^{-1/4}$
 Extinction coefficient:
 $\chi = 0.00015(4)$
 Atomic scattering factors from *SHELXTL-Plus* (Sheldrick, 1991)

Table 1. Fractional atomic coordinates and equivalent isotropic displacement parameters (Å^2)

$$U_{\text{eq}} = (1/3)\sum_i \sum_j U_{ij} a_i^* a_j^* \mathbf{a}_i \cdot \mathbf{a}_j$$

| | x | y | z | U_{eq} |
|-------|-------------|-------------|--------------|-----------------|
| Sn(1) | 0.10350 (2) | 0.91357 (2) | 0.54452 (2) | 0.0209 (2) |
| O(1) | 0.2115 (2) | 0.8257 (2) | 0.59530 (17) | 0.0215 (10) |
| C(1) | 0.2949 (3) | 0.8079 (3) | 0.5504 (3) | 0.0175 (16) |
| C(2) | 0.2945 (3) | 0.7334 (3) | 0.4802 (3) | 0.0206 (16) |
| C(3) | 0.3761 (4) | 0.7260 (3) | 0.4272 (3) | 0.0272 (18) |
| C(4) | 0.4554 (4) | 0.7855 (4) | 0.4453 (3) | 0.0280 (18) |
| C(5) | 0.4578 (3) | 0.8496 (3) | 0.5209 (3) | 0.0240 (17) |
| C(6) | 0.3798 (3) | 0.8621 (3) | 0.5766 (3) | 0.0169 (16) |
| C(7) | 0.2098 (3) | 0.6612 (3) | 0.4596 (3) | 0.0254 (17) |
| C(8) | 0.1298 (3) | 0.7066 (3) | 0.3920 (3) | 0.0361 (18) |
| C(9) | 0.1697 (4) | 0.6245 (4) | 0.5540 (3) | 0.0413 (19) |
| C(10) | 0.2426 (4) | 0.5705 (4) | 0.4070 (4) | 0.047 (2) |
| C(11) | 0.3888 (3) | 0.9320 (3) | 0.6637 (3) | 0.0230 (17) |
| C(12) | 0.3504 (4) | 0.8851 (4) | 0.7537 (3) | 0.0359 (18) |
| C(13) | 0.4945 (3) | 0.9603 (4) | 0.6922 (3) | 0.0362 (19) |
| C(14) | 0.3357 (3) | 1.0281 (4) | 0.6372 (3) | 0.0340 (18) |
| O(2) | 0.0251 (2) | 0.8700 (2) | 0.65562 (17) | 0.0199 (10) |
| C(15) | -0.0625 (4) | 0.9145 (3) | 0.6641 (3) | 0.0156 (17) |
| C(16) | -0.1489 (4) | 0.8712 (3) | 0.6216 (3) | 0.0183 (17) |
| C(17) | -0.2332 (4) | 0.9277 (4) | 0.6163 (3) | 0.0230 (18) |
| C(18) | -0.2343 (3) | 1.0191 (4) | 0.6562 (3) | 0.0243 (18) |
| C(19) | -0.1527 (4) | 1.0531 (3) | 0.7098 (3) | 0.0230 (17) |
| C(20) | -0.0654 (3) | 1.0011 (3) | 0.7176 (3) | 0.0159 (16) |
| C(21) | -0.1527 (3) | 0.7660 (3) | 0.5867 (3) | 0.0223 (16) |
| C(22) | -0.2572 (4) | 0.7333 (4) | 0.5576 (4) | 0.059 (2) |
| C(23) | -0.0950 (4) | 0.7492 (4) | 0.4986 (4) | 0.061 (2) |
| C(24) | -0.1123 (4) | 0.6991 (4) | 0.6687 (3) | 0.047 (2) |
| C(25) | 0.0208 (3) | 1.0380 (3) | 0.7848 (3) | 0.0209 (16) |
| C(26) | -0.0073 (4) | 1.1228 (4) | 0.8471 (4) | 0.054 (2) |
| C(27) | 0.0583 (4) | 0.9585 (4) | 0.8550 (3) | 0.048 (2) |
| C(28) | 0.1036 (4) | 1.0736 (4) | 0.7287 (3) | 0.057 (2) |

Table 2. Selected geometric parameters (Å , $^\circ$)

| | | | |
|-----------------|-----------|------------------|-----------|
| Sn(1)—O(2) | 2.044 (3) | Sn(1)—O(1) | 2.003 (3) |
| O(2)—C(15) | 1.368 (6) | O(1)—C(1) | 1.373 (5) |
| O(1)—Sn(1)—O(2) | 88.8 (1) | Sn(1)—O(2)—C(15) | 117.2 (2) |
| Sn(1)—O(1)—C(1) | 125.0 (2) | | |

The crystal used for data collection was coated in Nujol and mounted on a fiber in the nitrogen cold stream of the diffractometer. Data reduction was carried out using the Enraf-Nonius *MolEN* (Fair, 1990) system. The structure was solved by Patterson methods using the *SHELXTL-Plus* (Sheldrick, 1991) program, with full-matrix least-squares refinement on F^2 . All non-H atoms were refined anisotropically and H atoms were placed in calculated positions.

Lists of structure factors, anisotropic displacement parameters, H-atom coordinates and complete geometry have been deposited with the British Library Document Supply Centre as Supplementary Publication No. SUP 71673 (16 pp.). Copies may be obtained through The Technical Editor, International Union of Crystallography, 5 Abbey Square, Chester CH1 2HU, England. [CIF reference: CR1074]

References

- Çetinkaya, B., Gümrükçü, I., Lappert, M. F., Atwood, J. L., Rogers, R. D. & Zaworotko, M. J. (1980). *J. Am. Chem. Soc.* **102**, 2088–2089.
- Fair, C. K. (1990). *MolEN. An Interactive Intelligent System for Crystal Structure Analysis*. Enraf-Nonius, Delft, The Netherlands.
- Sheldrick, G. M. (1991). *SHELXTL-Plus*. Release 4.1. Siemens Analytical X-ray Instruments Inc., Madison, Wisconsin, USA.

Acta Cryst. (1994). **C50**, 704–706

[Au₂(C₆H₅CS₂)(μ-dppm)₂]Cl

JU-CHUN WANG*

Department of Chemistry, Soochow University, Taipei, Taiwan

LING-KANG LIU

Institute of Chemistry, Academia Sinica, Taipei, Taiwan

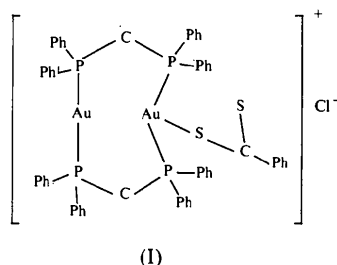
(Received 19 January 1993; accepted 7 October 1993)

Abstract

Bis[μ-bis(diphenylphosphino)methane-1κP:2κP']-(dithiobenzoato-1κS)digold(I) chloride, [Au₂(C₆H₅CS₂)(μ-dppm)₂]Cl, where dppm = C₂₅H₂₂P₂, was synthesized and structurally characterized. The Au...Au separation is 3.0176 (5) Å. The coordination geometries of the two Au centers differ. The bonds across the Au1 center are nearly linear with Au—P distances of 2.301 (2) and 2.305 (2) Å. The coordination number of the Au2 center is four; the two Au—P distances are 2.317 (2) and 2.335 (2) Å and the Au—S distance is 2.718 (3) Å. The dithiobenzoate ligand is coordinated to only one metal center (Au2) through one of its S atoms. The two S—C distances in this ligand are equal.

Comment

The luminescent and bonding properties of binuclear gold(I) complexes have been gaining attention recently (Khan, Fackler, King, Wang & Wang, 1988; King, Wang, Khan & Fackler, 1989). In this paper we report the crystal structure of



Au₂(C₆H₅CS₂)(μ-dppm)₂Cl, (I). A short Au...Au contact [3.0176 (5) Å], similar to that in other Au₂(dppm)₂X₂ complexes [X = Cl (Schmidbaur, Wohleben, Schubert, Frank & Huttner, 1977), NO₃ (Wang, Khan & Fackler, 1989), BH₃CN and S₂CNEt (Khan, King, Heinrich, Fackler & Porter, 1989)] is observed. Unlike the Au centers in the other Au₂(dppm)₂X₂ compounds, the two Au centers in the title compound are asymmetric; the overall geometry about Au1 is close to linear and the dithiobenzoate is coordinated to only one metal center through one S atom, with an Au2—S1 distance of 2.718 (3) Å. The linearity of P2—Au2—P4 [159.66 (8)°] is perturbed by the interaction between the Au2 and S1 atoms. Thus, the overall coordination geometry of Au2 can be viewed as distorted tetrahedral. The two S—C bond distances in the dithiobenzoate ligand are not significantly different. Fig. 1 shows an ORTEP (Johnson, 1970) drawing of the molecule.

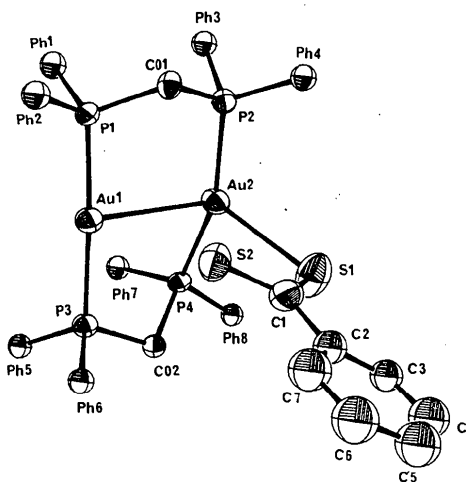


Fig. 1. ORTEP drawing of the title compound with 50% probability ellipsoids for non-H atoms. C atoms on the phenyl rings are omitted for clarity, except for those attached to the P atoms.

Experimental

Crystal data

[Au₂(C₆H₅CS₂)-
(C₂₅H₂₂P₂)₂]Cl
M_r = 1351.44

D_x = 1.732 Mg m⁻³
Mo Kα radiation
λ = 0.71073 Å